

## 23 Wyreema Avenue Goonellabah

### Table of Contents

- | [Property Details](#)
- | [Photo Gallery](#)
- | [Map](#)
- | [Contact For Inspection](#)

## Property Details

**23 Wyreema Avenue, Goonellabah**



**AFFORDABLE HOME**

3  1  1 

Located in the heart of Goonellabah, just 500 metres from the local shopping centre and sporting fields, this inviting home offers the perfect blend of convenience, comfort, with an affordable price.

- 3 Bedrooms
- 1 Bathroom
- 1 Carport
- Floor boards
- Fully Fenced
- Built In Robes

The open plan living space is warm and welcoming, featuring charming, polished timber floors that add character and style. A beautifully renovated central kitchen brings a modern touch, seamlessly connecting to the living area and overlooking the fully fenced backyard.

There are three bedrooms, two are equipped with ceiling fans for summer comfort, while the main bathroom offers both a shower and a bath, complemented by a separate toilet for added practicality.

Outside, the generous level backyard provides a secure and spacious area for children and pets to enjoy, room for the future shed or pool. A single carport to the side of the home completes this appealing package, making it an excellent choice for families, first home buyers or investors with a current tenant in place.

---

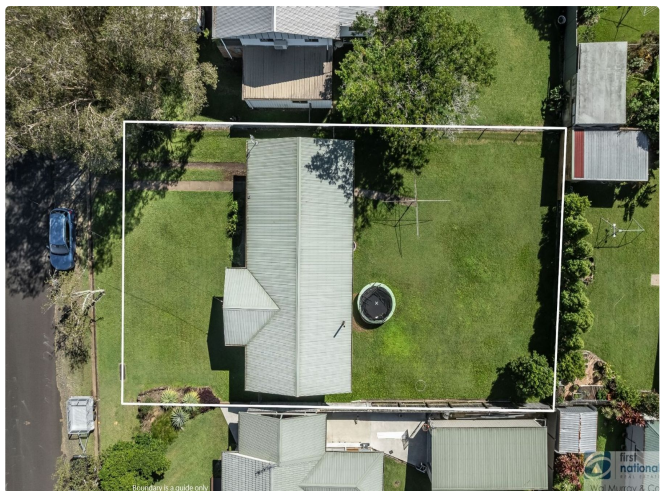
**\$569,000**



## Photo Gallery







Dimensions are approximate. All information contained herein gathered from sources we believe to be reliable. However we cannot guarantee its accuracy and interested persons should rely on their own enquiries. Single intended use purposes only, not to be duplicated © 2025 www.vicrealemedia.com.au - 0411 444 223

23 Wyreema Avenue, Goonellabah



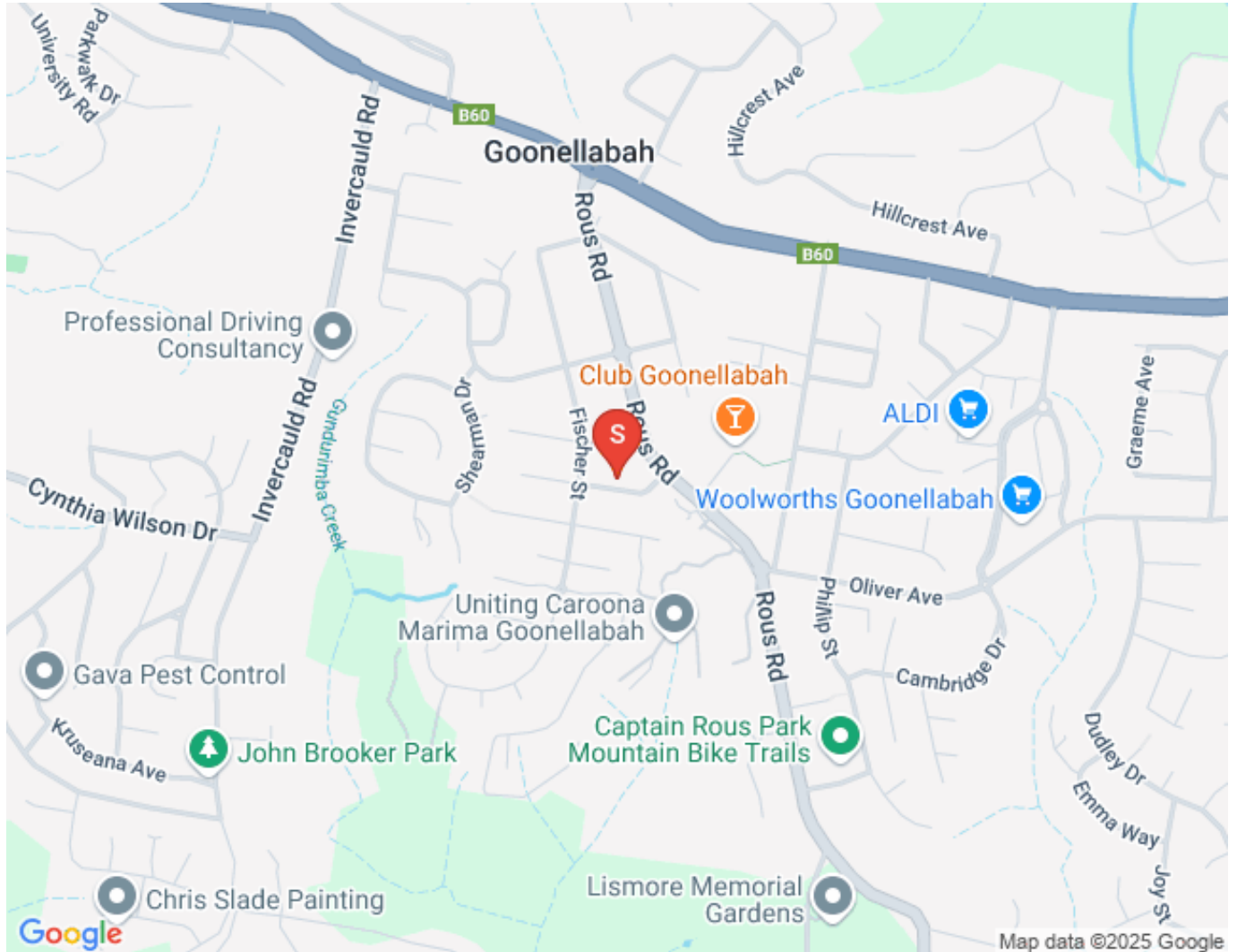
Dimensions are approximate. All information contained herein gathered from sources we believe to be reliable. However we cannot guarantee its accuracy and interested persons should rely on their own enquiries. Single intended use purposes only, not to be duplicated © 2025 www.vicrealemedia.com.au - 0411 444 223

23 Wyreema Avenue, Goonellabah





## Map



## Contact For Inspection



**BENJAMIN CONTE**

LICENSED REAL ESTATE AGENT

0408 368 913

[ben@walmurray.com.au](mailto:ben@walmurray.com.au)